

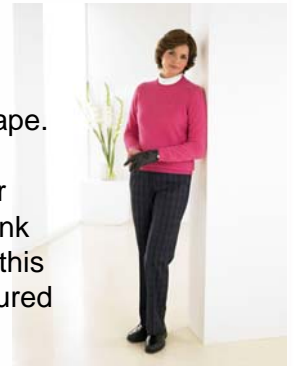
## WARM UP TO WINTER

One Up Golf, the UK's leading mail order quality clothing company for ladies, has just launched its Autumn collection with lots of exciting new introductions. Of particular interest are the Cut Off Trousers which Sue Binnie describes as a winning design. 'They combine the length of our very popular half shot trousers with a flat front to create a very flattering shape. The moment our customers received their brochures they were contacting us and placing orders for them' she said.



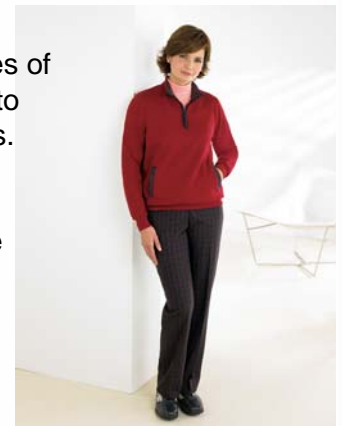
The new Cut Off Trousers (GTR7705, £49.50, sizes 10-20) are beautifully tailored and designed with comfort in mind. Made from a top quality winter weight wool blend fabric, they are machine washable and require minimum ironing. In two colours, classic navy and a fabulous warm aubergine colour, as featured left, they are teamed up here with the beautifully soft Long Sleeve Polo Shirt (GTO6103, £27.50, sizes S-XL).

Silverdale Trousers (GTR7706, £59, sizes 10-20) are another delightful new introduction. With a flat front and straight leg, these smart trousers are a truly flattering shape. Tailored in a medium weight wool mix fabric - 60% wool, 38% polyester and 2% elastane - with a touch of stretch, they are a joy to wear and are easy to machine wash. The lovely grey check with subtle shades of pink and blue will mix and match with different coloured tops and knitwear such as this lovely azalea coloured Lambswool Sweater (GKN7700, £50, sizes S-XL), featured here, which is also new this Autumn.



Make a bold statement on the golf course this season in the Alicia Polo Shirt (GTO7799, £29.50, sizes S-XL) with smart stripes of navy and fuchsia. This fabulous long sleeve polo shirt is made in 100% soft cotton interlock for real warmth and comfort.

Richmond is a new winter check collection in warm tones of russet, stone and navy offering countless opportunities to mix and match with roll necks, sweaters and sweatshirts. Our picture shows Richmond Trousers (GTR7707, £59, sizes 10-20) made of 60% wool, 38% polyester, 2% elastane, with a flat front and straight leg to create the most elegant shape. Also pictured is the matching Richmond Sweatshirt (GT07716, £40, sizes S-XL) which is trimmed at the collar and cuffs in the same fabric.



The new Autumn brochure from One Up Golf is available now, but if you haven't received your copy or would like to request a copy for a friend, please call 0870 787 2011 or visit the website and shop on line at [www.oneupgolf.co.uk](http://www.oneupgolf.co.uk). Personal shoppers are welcome at the One Up Golf Shop in the pretty Northamptonshire village of Castle Ashby, where the shop enquiry line is 01604 696222.